

# DEDDINGTON HEALTH CENTRE

## NEWSLETTER

Autumn 2014 Edition    [www.deddingtonsurgery.co.uk](http://www.deddingtonsurgery.co.uk)

### FLU VACCINATION CAMPAIGN 2014



Seasonal flu is a highly infectious illness caused by a flu virus. The virus infects your lungs and upper airways, causing a sudden high temperature and general aches and pains. You could also lose your appetite, feel nauseous and have a dry cough. Symptoms can last for up to a week. We offer 'at risk' groups the flu vaccine each year in the Autumn to protect you against the flu virus.

You are eligible to have a flu jab if you are:

- 65 years of age and over
- pregnant
- Have a serious heart or chest complaint, including asthma (treated with a steroid inhaler)
- serious kidney disease
- diabetes
- lowered immunity due to disease or treatment such as steroid medication or cancer treatment -chemotherapy
- if you have ever had a stroke

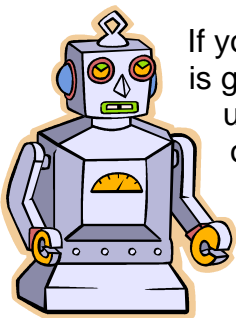


We will also be offering Shingles vaccinations and Pneumovax vaccinations at the same time if you are eligible to have them.

ALL healthy children who are aged 2, 3 and 4 years old are invited to receive a new flu vaccine this year. This is in the form of a nasal spray.

Our clinics have now started. They are on weekday afternoons and on some Saturday mornings in October and November. Please contact Reception on **01869 338611** to book an appointment if you are eligible.

### DEDDINGTON HEALTH CENTRE BUILDING AND ROBOT PROJECT HAS STARTED!



If you have attended the Health Centre this week, you will be aware that building work is going on at the bottom end of the surgery. We apologise for the noise, but it's unavoidable unfortunately, as we are having all the internal walls at the bottom end of the building removed to provide a big internal area into which will move our Dispensary and the robot.

This first phase – which will create the large space for our new Dispensary – will go on for approximately two months, after which the new Dispensary will open.

Phase 2 of the project involves converting the current Dispensary into :

- A new consulting room for Dr McLaughlin, which will be near the main waiting room
- A new administration office for 3 of our staff
- A new community nurses office for our District Nurses and Health Visitors
- A new clinical room by the waiting room

We anticipate that the project will be completed by mid December 2014, and we hope you will be sympathetic with us until then, as everyone is having to work in cramped conditions or room hop!

Our District Nurses have moved to Kings Sutton for the duration of the building project but they will be back onsite in December. Their phone number has not changed.



Once the project is all completed it will enable those who request it, to collect their prepared repeat medication from our new **Pharmaself** at any time convenient to them, without going into the surgery, This will be helpful to all those who work during the week and who would like to pick up medication in the evening or at weekends.

## CAR PARKING

We only have a small car park at the surgery. Please can we remind everyone parking a car at the surgery to be very careful when parking their car or opening the car door to ensure that :



- You leave space for the car owner next to you to get in and out of their car
- You are careful when opening your car door not to damage the paint on the car next door
- You are careful when manoeuvring your car in the car park, not to bump another vehicle
- You do not block anyone in by parking in front of them

Thank you!

## COMINGS AND GOINGS



We have some staff changes to report. Dr Helen Taylor, who was with us as our GP Registrar (a GP in training) finished her training with us in early August 2014 and has returned to working with the RAF. She has been replaced by our new GP Registrar, Dr Alia Butt. She has previously worked for some years as a Paediatrician, and is now in her third year of training to be a GP. Welcome! We are

delighted to have her with us.!



Our Practice Manager, Mrs Sue Johnson is retiring at the end of October 2014, after 9 years at the surgery. She is being replaced by Ms Melanie Watkins, who has been with us for 2 years as our IT Manager, so some of you may have seen her round and about the surgery. From November 2014 she will be the one answering all the queries that come via the website etc.



## PATIENT ACCESS

The Practice is now offering an alternative way of ordering repeat medication, and also gives you the ability to make and cancel GP appointments online. The method is called Patient Access.

In order to use this system, you have to come to the surgery with photo ID (either passport or photo driving licence). This is required because Patient Access allows you to look at your own prescriptions on our clinical system and tick which ones you need. Therefore we have to be certain that the correct person gets the access.

When you request Patient Access at the surgery, a receptionist will print out a Patient Access letter, with your password on it and this has to be activated within 14 days of the date of the letter. The password can be changed to one of your choice once you have completed the online registration.

Coming soon, using Patient Access, you will be able to view aspects of your medical record and change some of your personal details such as address/phone number/email address, but not anything that requires a license eg surname when you marry.